

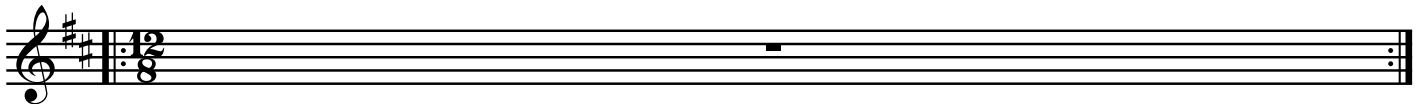
Everywhere Rain

Bill Frisell/Parsons
- lyrics, Geoff Bowie

OPEN
on cue take A

♩. = 54

Em⁷(add13)



2 Em⁷(add13) **A**



1. I thought the air was clear__ last night when you were here_____ what's
2. You__ said you had to leave__you can't ex-plain to me_____ what's
3. When you're ly - ing close to me__there's nowhere I want to be_____ sur-
4. Last night were you in-side me__was I in - side of you?_____ you're



wrong_____ so long_____ you're gone_____ eve-ry-
 wrong_____ so long_____ I'm gone_____
 prise_____ like rain_____ there's rain
 here_____ still here_____ you're you.

D.C.

B

10 Em⁷(add9) Dm⁷(add9)

Bm⁷(add9) Am⁷(add9)

Gmaj7 Fmaj7(#11)



where rain_____ eve-rywhere rain_____ eve-rywhere rain

